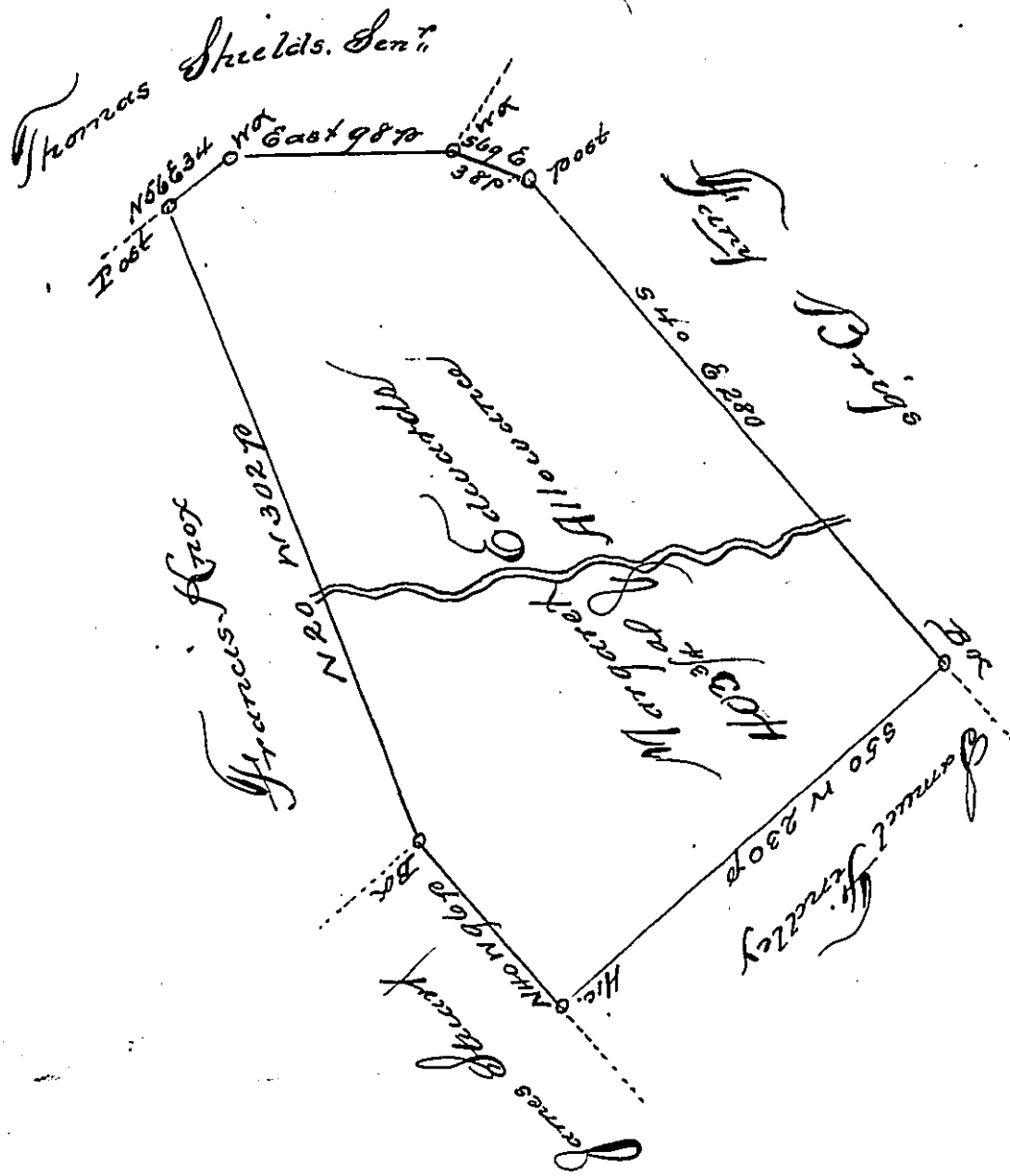


746-217



Survey to Margaret Edwards on the 14th May, 1789, the above Described Tract, Containing Four Hundred and three acres, and three quarters of an acre and allowance of six p. Cent. Situate joining an Old Survey on the north on the waters of Plum Creek, in Westmoreland County, By warrant of the 28th Feb^y. 1785,
 Joshua Clarke C^y.

John Lukens Esq.
 S. Genl.

IN TESTIMONY that the above is a copy of the original remaining on file in the Department of Internal Affairs of Pennsylvania, made conformably to an Act of Assembly approved the 16th day of February, 1833, I have hereunto set my Hand and caused the Seal of said Department to be affixed at Harrisburg, this 1st day of September 1903.

Francis P. Brown
 Secretary of Internal Affairs.